

Larkshill Engineering - Plant List – 2024

CNC 5 AXIS MILLING

1 Correanayak Performer-2000 MG8 with Heidenhain 530i control

Table dimensions (mm) MG 8 / MG 9
Traverses of axis X: 2000, Y: 1250, Z: 1100
Spindle nose ISO 50 DIN 6987
Spindle power (Kw) 30
Speed range (Rpm) 6.000 /4.000



1 Kafo BMC 5131 Double Column Machining Centre with Heidenhain iTNC640 HSCI control

Table dimensions (mm) Y: 5000, X: 2,900
Traverses of axis (mm) X: 5,100, Y: 4,000, Z: 1,500
Max loading capacity: 20,000 Kg
Spindle power (Kw) 37
Speed range (Rpm) 8,000/10,000
Positioning Accuracy (ISO 8636) 0.04mm
MNC-1200 R – CNC Rotary table



8 Bond Street,
Hockley,
Birmingham, B19 3LB, U.K.
Tel: +44 121 236 2617
Email: enquiries@larkshill.com
Web: www.larkshill.com

**1 Dugard HSM600 High speed 5 axis VMC
with Heidenhain TNC 530i CNC system**

Traverse X : 1,020mm
Traverse Y : 610mm
Traverse Z: 610mm
Table diameter: 610mm
C axis rotation : 360°



**1 Dugard DBM 2150 Dugard 5 Axis HD
Vertical Machining Centre with Heidenhain
630i control system**

Traverse X : 2,150mm
Traverse Y : 1,400mm
Traverse Z: 1,100mm
Table load: 4,000Kg
Universal Head and T Slotted Indexing Table



8 Bond Street,
Hockley,
Birmingham, B19 3LB, U.K.
Tel: +44 121 236 2617
Email: enquiries@larkshill.com
Web: www.larkshill.com

CNC TURNING

1 DOOSAN PUMA 700LM CNC LATHE

Fanuc 32iT control

Swing: Ø1030 x 3200

Maximum weight on spindle 7300Kg



1 DOOSAN PUMA 400MB CNC LATHE WITH LIVE TOOLING

Fanuc 21iT control

Swing: Ø700 x 978



1 DOOSAN PUMA 600 CNC LATHE

Fanuc 18i control

Swing: Ø1050 x 1500



8 Bond Street,
Hockley,
Birmingham, B19 3LB, U.K.
Tel: +44 121 236 2617
Email: enquiries@larkshill.com
Web: www.larkshill.com

**1 SMEC SL2500BY CNC LATHE with
Mill/Drill toolholders**

Control: Fanuc 0iTF

Swing: \varnothing 235 x 580



CNC MILLING

**1 Dugard HD 2210B - HD Box Way
Vertical Machining Centre**

Traverse X 2,200mm

Traverse Y 1,000mm

Traverse Z 900mm

Table size 2,200 x 1,000mm

T Slots 22 x 7 x 150mm

Maximum table load 3,000kg



1 MTE BF – 3200

Working Surface: 3200 x 1000

(X = 4500, Vertical = 1000

Max load: 14,000 KG)



8 Bond Street,
Hockley,
Birmingham, B19 3LB, U.K.
Tel: +44 121 236 2617
Email: enquiries@larkshill.com
Web: www.larkshill.com

2 TOS WHN 105 CNC H/B

Control: Heidenhain TCN 530 4 axis

Capacity: 1400 x 1600

(x=2000, vertical 1500) Max. dia. 3000



1 DAEWOO DB130C HEAVY DUTY H/B AND MILLING

Control: Fanuc 18MI 4 axis

Capacity: 2000 X 1600 (x = 3000, vertical = 2000) Max. dia. 3400



1 LAGUN GBM 22E CNC BEDMILL

Control: Heidenhain TNC530

Table Size: 2000 x 1200 x 1500

Fitted with universal head



8 Bond Street,
Hockley,
Birmingham, B19 3LB, U.K.
Tel: +44 121 236 2617
Email: enquiries@larkshill.com
Web: www.larkshill.com

**1 KAFO BMC 4122 Double Column
Machining Centre**

Control: Heidenhain iTNC640

Traverse X 4,100mm
Traverse Y 2,200mm
Traverse Z 1,100mm
Table size 4,000 x 2,100mm
Maximum table load 17,000kg

**Machine is 4 axis with a dedicated rotary
table**



1 BRIDGEPORT INTERACT 720X

Control: Heidenhain 2500

Capacity: 720 x 410 x 500



2 BRIDGEPORT VMC 1000

Control: Heidenhain 530

Capacity: 1000 x 600 x 600 (1 machine is 4
axis with a dedicated rotary table)



8 Bond Street,
Hockley,
Birmingham, B19 3LB, U.K.
Tel: +44 121 236 2617
Email: enquiries@larkshill.com
Web: www.larkshill.com

VERTICAL BORING

1 YOU JI CNC VERTICAL BORER WITH LIVE HEAD FUNCTIONS

Fanuc OIT control with 16 position tool magazine.

Table 1800.
Swing 2000.

Vertical capacity 1200.
Capable of CNC drilling, Milling and Grinding.



1 WEBSTER & BENNETT CNC ELEVATING RAIL VERTICAL BORER

Fanuc 10TF control with 5 station auto indexing turret

Swing: 2134
Vertical Capacity: 1100



1 WEBSTER & BENNETT 120" DCH Double Column Vertical Turning and Boring Machine

Max Swing	3,100 mm
Max height under cross rail	1,981 mm
Max table load	22,000 Kg
Ram slide vertical travel	1,220 mm
Turret slide vertical travel	965 mm



8 Bond Street,
Hockley,
Birmingham, B19 3LB, U.K.
Tel: +44 121 236 2617
Email: enquiries@larkshill.com
Web: www.larkshill.com

EDM

1 SODICK AQ750L WIRE ERODER

Table size: 1050 x 750 x 400ht. (Taper \pm 30°)



1 SODICK MOULD MASTER 5 SPARK ERODER

Component capacity: 1050 x 1050 x 350mm



3D PRINTING

1 MarkForged Mark Two 3D Printer

Working Space: 320 x 132 x 154 mm
Ability to print: Onyx, Nylon 6 White, Fibreglass, Carbon fibre, Kevlar fibre, HighTemp Fibreglass



8 Bond Street,
Hockley,
Birmingham, B19 3LB, U.K.
Tel: +44 121 236 2617
Email: enquiries@larkshill.com
Web: www.larkshill.com

JIG BORING

1 GENEVOISE SIP HYDROPTIC 7

Table size: 1550 x 1000

Long travel: 1400

Vertical gap: 1270

Gap to upright: 1500

Machines are equipped with a full complement of boring.



1 GENEVOISE SIP HYDROPTIC 7A

Table size: 900 x 1300

Long travel: 1120

Vertical gap: 1000

Gap to upright: 1150

The machine has a full complement of boring equipment.



8 Bond Street,
Hockley,
Birmingham, B19 3LB, U.K.
Tel: +44 121 236 2617
Email: enquiries@larkshill.com
Web: www.larkshill.com

GRINDING

**1 Dugard - Chevalier FSG1640ADII
Precision Automatic Surface Grinder with
Micro Processor Based Control System**

Table size	400 x 1000mm
Maximum grinding length	1015mm
Maximum grinding width	405mm
Maximum vertical distance	620mm



**1 MYFORD MG12HA –
UNIVERSAL CYLINDRICAL GRINDER**



**1 J & S 1307 UNIVERSAL CYLINDRICAL
GRINDER**



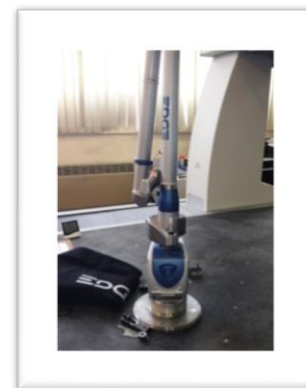
8 Bond Street,
Hockley,
Birmingham, B19 3LB, U.K.
Tel: +44 121 236 2617
Email: enquiries@larkshill.com
Web: www.larkshill.com

INSPECTION

Final quality inspection is carried out in a fully equipped and temperature controlled inspection facility, with state of the art equipment. We also have the capability to inspect on machine with mobile verification equipment.

1 DEA GLOBAL Silver SF CMM

X: 1200 mm, Y: 3000 mm, Z: 1000 mm. Accuracy: MPEE = from 1.4 + L/333 μ m (15 – 30 °C)



1 FARO ARM EDGE

1.8m to 3.7m (spherical working volume. Accuracy from 0.024mm to 0.064mm

Smart Sensor Technology, Internal Counterbalance & Temperature Sensors

1 TESA HITE 700

700mm measuring range
Built-in Air Cushion and fixed panel
Diameter measuring determines highest and lowest point, parallelism and perpendicularity



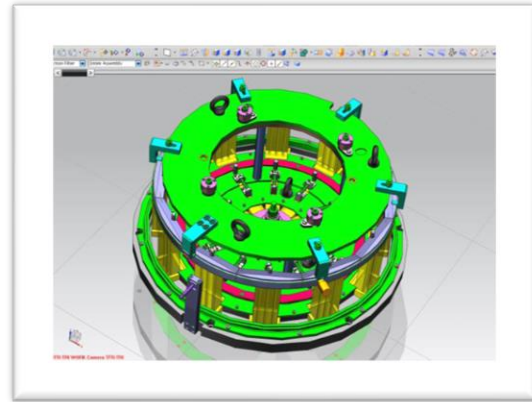
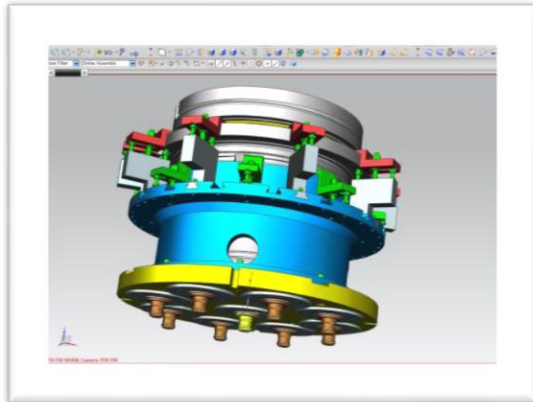
2 TESA UNIMASTER

ID/OD gauge (minimum bore = 250mm, maximum bore = 2500mm).

8 Bond Street,
Hockley,
Birmingham, B19 3LB, U.K.
Tel: +44 121 236 2617
Email: enquiries@larkshill.com
Web: www.larkshill.com

PROGRAMMING AND DESIGN

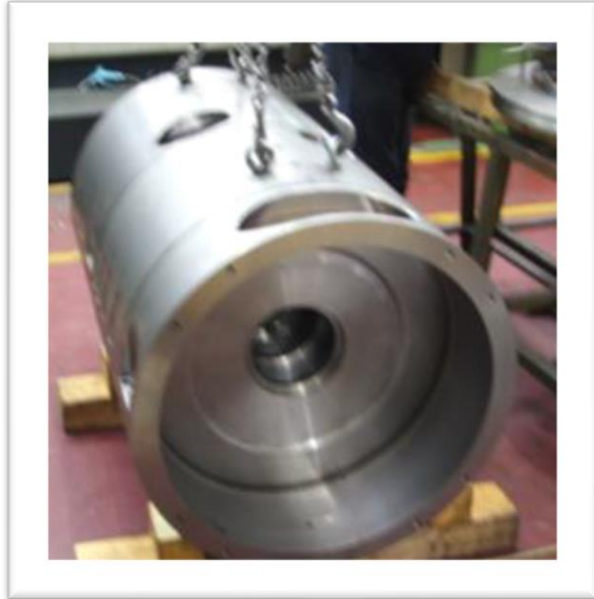
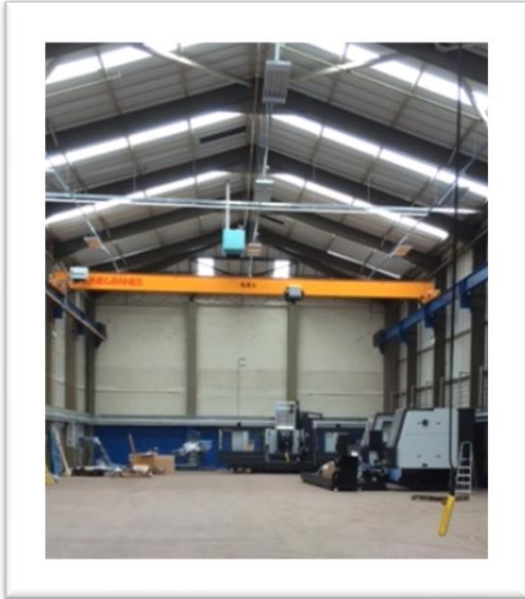
As part of an integrated service Larkshill Engineering offers an on-site design service staffed by experienced personnel using the latest design equipment which includes UNIGRAPHICS NX11 CAD 3D Modelling, Autocad Drafting Package and FEA software. Programming to the workshop is also performed via a DNC link and using the facility of Solid CAD CAM System. With our team of technical project managers, we also are able to control your project both in terms manufacture and design.



GENERAL ASSEMBLY

With a recent expansion to a new facility, Larkshill now has a combined footprint of 17,000 square feet on 2 facilities. Both facilities are fully equipped with all ancillary equipment required in the manufacture of tooling and components, including on machine inspection. Both facilities are also covered throughout with 5 and 10 TONNE overhead lift capacity in addition to mobile lift facilities.

8 Bond Street,
Hockley,
Birmingham, B19 3LB, U.K.
Tel: +44 121 236 2617
Email: enquiries@larkshill.com
Web: www.larkshill.com



INTEGRATED SUPPLY CHAIN

Larkshill has worked with its supplier chain for nearly 30 years to offer an integrated service offering. All suppliers are continuously monitored and go through an appraisal process to ensure they meet the required standards of quality and reliability. Additional services we offer through our suppliers include the following activities:

- Heat treatment
- Proof load and pressure testing
- Fabrication and welding
- Hydraulics, pneumatics and electrical circuitry
- Material Testing
- Coating/plating
- 3-D printing/laser scanning

**8 Bond Street,
Hockley,
Birmingham, B19 3LB, U.K.
Tel: +44 121 236 2617
Email: enquiries@larkshill.com
Web: www.larkshill.com**



8 Bond Street,
Hockley,
Birmingham, B19 3LB, U.K.
Tel: +44 121 236 2617
Email: enquiries@larkshill.com
Web: www.larkshill.com